

# Anti-CD20 hIgG1 Reference Antibody (Ocrebio)

## Product Information

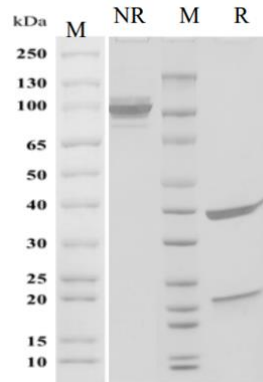
<b>Product Name</b>	Anti-CD20 hIgG1 Reference Antibody (Ocrebio)
<b>Storage temp.</b>	Store at 2-8°C short term (1-2 weeks).Store at $\leq -20^{\circ}\text{C}$ long term. Avoid repeated freeze-thaw.
<b>Catalog# / Size</b>	<b>GM-87986MAB-1mg / 1 mg</b> <b>GM-87986MAB-5mg / 5 mg</b> <b>GM-87986MAB-25mg / 5 mg * 5 vials</b> <b>GM-87986MAB-50mg / 50 mg</b> <b>GM-87986MAB-100mg / 50 mg * 2 vials</b>

## Antibody Information

<b>Expression System</b>	CHO
<b>Aggregation</b>	< 5% as determined by SEC-HPLC
<b>Purity</b>	> 95% as determined by SDS-PAGE
<b>Endotoxin</b>	< 1 EU/mg, determined by LAL gel clotting assay
<b>Sterility</b>	0.2 $\mu\text{m}$ Filtered
<b>Target</b>	CD20
<b>Clone</b>	Ocrelizumab
<b>Alternative Names</b>	B1, Bp35, MS4A1, CVID5, FMC7, LEU-16, S7
<b>Source/Isotype</b>	Monoclonal human IgG1(KEEM), Kappa
<b>Application</b>	/
<b>Description</b>	The CD20 gene encodes a transmembrane protein called CD20 (MS4A1), which is specifically expressed on the surface of B cells. Ocrelizumab is a humanized anti-CD20 monoclonal antibody that primarily induces B-cell lysis or apoptosis through two mechanisms: antibody-dependent cellular cytotoxicity (ADCC) and complement-dependent cytotoxicity (CDC).
<b>Formulation</b>	phosphate-buffered solution, pH 7.2-7.4.

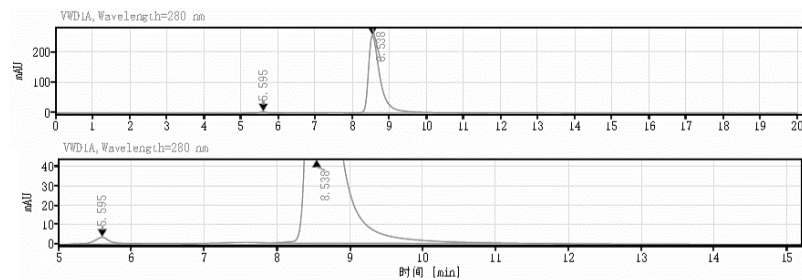
## Data Examples

### SDS-PAGE



On SDS-PAGE under reducing (R)/non-reducing(N-R) condition. The gel was stained overnight with Coomassie Blue. The purity of the protein is greater than 95%.

### SEC-HPLC



The purity of this product is more than 95% verified by SEC-HPLC